

Tandy's Combos - Jan. 2015



Gold Mine makes a bold statement with **Lavish Blooms...** add **Top Notch** p & e or add **French Vanilla** p or **Zebra** p Layer **Gold Mine** with **Isabella** & **Simple Twist** e or change to **Extravaganza** e for a little more fun.



Under the Sea is a great silver version of **Beliz!** Double up & add the single strand from **Sugar Rush** with **Julia** e or butterfly to the front & add **Prissy** p ...Wear long & add strands from **Stunning** ... Layer **True Blue** & **Color Pop** e to the silver strand



Sugar Rush n is THE most versatile, use just the single color strand as a bracelet or necklace then add **Silver Swirl** p **Sunset** turquoise and coral colors are the easiest 2 color palettes to wear, layer **Seabreeze** & add **Extravaganza** e

Acapulco can be braided or layered up with **Peachy Keen** or **Cozumel**



Round About is the perfect Black & White combo for Spring. Layer up with **Inky & Frost**, remember the **Round About** can be long or short & the chain alone makes a great base necklace for other pendants (ex. **Silver swirl, Crossover, or Unbelievable**)



Cozumel has that Designer inspired look like none other – use its chain alone for the classic & elegant with **Simple Twist e** but add a touch of drama with **Ava or Mia e**. Use the **Paparazzi p & Crystal Chic e** for even more drama!!!!!!!!!!



Tropical Punch is vibrant & fun. You can layer with **Cece n & e** or **Cobalt n**!!!!!!



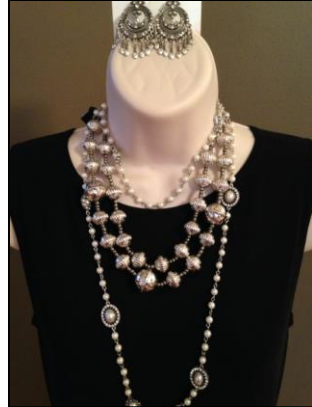
Barbados n gives us another Designer inspiration! Layer with **Arizona n** & add the **Bora Bora** pendant when doubled (show either side) and top off with **Arizona b**.



The Monterey ensemble goes with everything!!!!!! Wear alone or layer with **Newport**.

Looks amazing with Gold Mine.

And don't forget to show the silver side!!!!



Paradise n can be great alone with any silver earring but you could add some vintage touches with the single strand from Insta Glam.

Wear the single strand alone and add the Posey pin for a little drama or the Cozumel p

Layer it with Prim pearls and Claire earrings.

“This is of course my favorite Spring line! It’s versatile in color, style, and finishes & on TREND. There’s something for everyone and your retail will soar if you show its versatility.

Some of my favorites are not pictured because they were shown in your rally video, such as Sugar Rush which is spectacular!!!! Some of the pieces such as, Beach Glass, Garden Party & Pastel Perfection need nothing else. They stand on their own and are fantastic, just pick your fav earrings and you are set.

Have fun showing this jewelry and let it be the tool to help get you into people’s homes and enrich lives!!!!!!!!!!!!!!