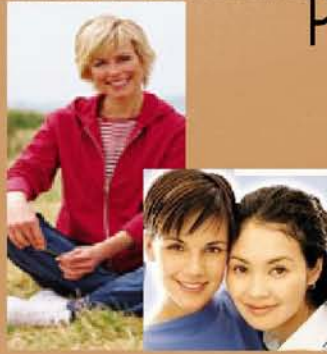


What's Your Fashion Personality?

We all have a fashion personality- some of us have more than one! Read on to find out which one you are and find pieces that will work for you!

If you are a natural woman, it is likely that you like a no fuss, easy style. You wear minimal makeup, dress for comfort, have a quick and easy hairstyle, and when it comes to accessories, you head straight for the small and dainty!



Pieces that will work for you:

- Whimsey Ensemble
- Stardust Ensemble
- Caleb Ring
- Bahama Blue Ensemble
- More Imagination Necklace
- Sorbet Two Ring
- Lauren Ensemble
- All 4 One Ring
- Night Out Ensemble
- Becoming Ensemble
- Cuff Em Bracelet

Natural

If you are a romantic, you may love ribbon and lace, hearts and bows! You're makeup tends to be natural and pretty and you love vintage pieces and "antiqued" style jewelry.

Romantic

Pieces that will work for you:

- Exquisite ring
- Unbelievable Ensemble
- Purple Passion Ensemble
- Angelina ring
- All Dressed Up Bracelet
- Love Me Tender Ensemble
- Pretty in Pink ring
- High Society Ensemble
- Center Stage Ensemble
- Madrid Ensemble
- Simple Truth Necklace
- Black Beauty Ensemble
- Ebony Ensemble
- Grace necklace
- Michela Ensemble



If you are a classic dresser, you may have clothes in your closet that you have worn for years and have yet to go out of style! You keep things tailored and steer clear of trendy cuts and prints, opting for warm classic colors such as navy, black, red, and chocolate. Your jewelry is also timeless and you may have lots of pearls, beads, and simple pieces that accommodate your classic style.



Pieces that will work for you:

- Madison Ave. Ring
- Hoop De Do Ensemble
- First Lady Ensemble
- Bella Ensemble
- Sophia Ensemble
- Highlights Ensemble
- After Hours Ring
- Bellissimo Ensemble
- Mahogany Ensemble
- Laura Ensemble
- Audrey Ensemble
- Jet Set Necklace
- Pacific Ensemble
- Patina Ensemble
- Tango Ensemble

CLASSIC

If you are a bold, your motto is the bigger, the brighter, the better! You love bright colors like pinks, oranges, and reds. You love bold prints like geometrics and animal prints. You love big jewelry and you may even love big hair! Your make up may be more dramatic and you carry larger, brighter, handbags.

BOLD



Pieces that will work for you:

- Opera Ring
- Paisley Bracelet
- Concord Ring
- Sunset Ensemble
- Milan Ring
- Mix It Up Ensemble
- Bohemian Ensemble
- Night Life Neckalce
- Debut Ensemble
- Portrait Neckalce
- Caramel Latte Ensemble
- Hidden Treasures Ensemble