

## *Ft. Worth to Haven of Hope ... From I-35W*

Traveling NORTH On I-35W, after passing through Hillsboro, get in the **LEFT HAND LANE** and take ...

I-35W to Ft. Worth (do not go through Dallas).

Go through Downtown Ft. Worth and you will travel around **26 miles**.

You will go past the Texas Motor Speedway on your left ...

Exit FM 407 (or Justin Road) and TURN RIGHT (East)

You will cross some Railroad Tracks .... Then ...

Turn LEFT on Highway 377 (North)

*FYI - in less than 2 miles, you will turn RIGHT.*

You will go through the town of ARGYLE.

Turn RIGHT on COUNTRY CLUB Dr.

(at a traffic light) *FYI - You will travel 2.5 miles on Country Club Dr.*

Soon after you pass a GOLF COURSE on your left, you will come to a **STOP SIGN**. Now, TURN LEFT.

*(FYI - There is no street sign, but this road is FM 1830 / Country Club Rd.)*

Immediately after you pass Brush Creek Rd. (which is on your left),

Turn RIGHT on Hilltop Road. It is right after a "DENTON City Limits" sign. *FYI - If you cross over RR tracks, you've gone too far.*

**HAVEN of HOPE** will be on your **left!**

**8343 Hilltop Road, Argyle, TX, 76226, # 940-241-2561**

**DIRECTIONS:**

\* *Haven of Hope ... BACK to Ft. Worth, Waco, Austin, via I - 35W*

**From Haven of Hope to Ft. Worth, Waco, Austin (I 35W)**

Come out of Haven of Hope driveway (Hilltop Road) and turn **RIGHT**.

At the **Stop Sign** ... Turn **LEFT** on **FM 1830**

**IMMEDIATELY** (a couple of hundred yards) after turning on FM 1830, you will veer (going to the RIGHT) and **TURN RIGHT** onto **COUNTRY CLUB RD.**

**Turn LEFT** at **Highway 377 (South)**. In **less than 2 miles** ...

**Turn RIGHT** on **FM 407 (East)**, which is Justin Road

Stay on that road until you come to I 35W.

**Turn LEFT** (South) on I 35W

**26 miles** from this point, you will be at **Downtown Ft. Worth**.

If you stay on **I - 35W** heading **south**, you will drive to **Waco, Austin, San Antonio.**

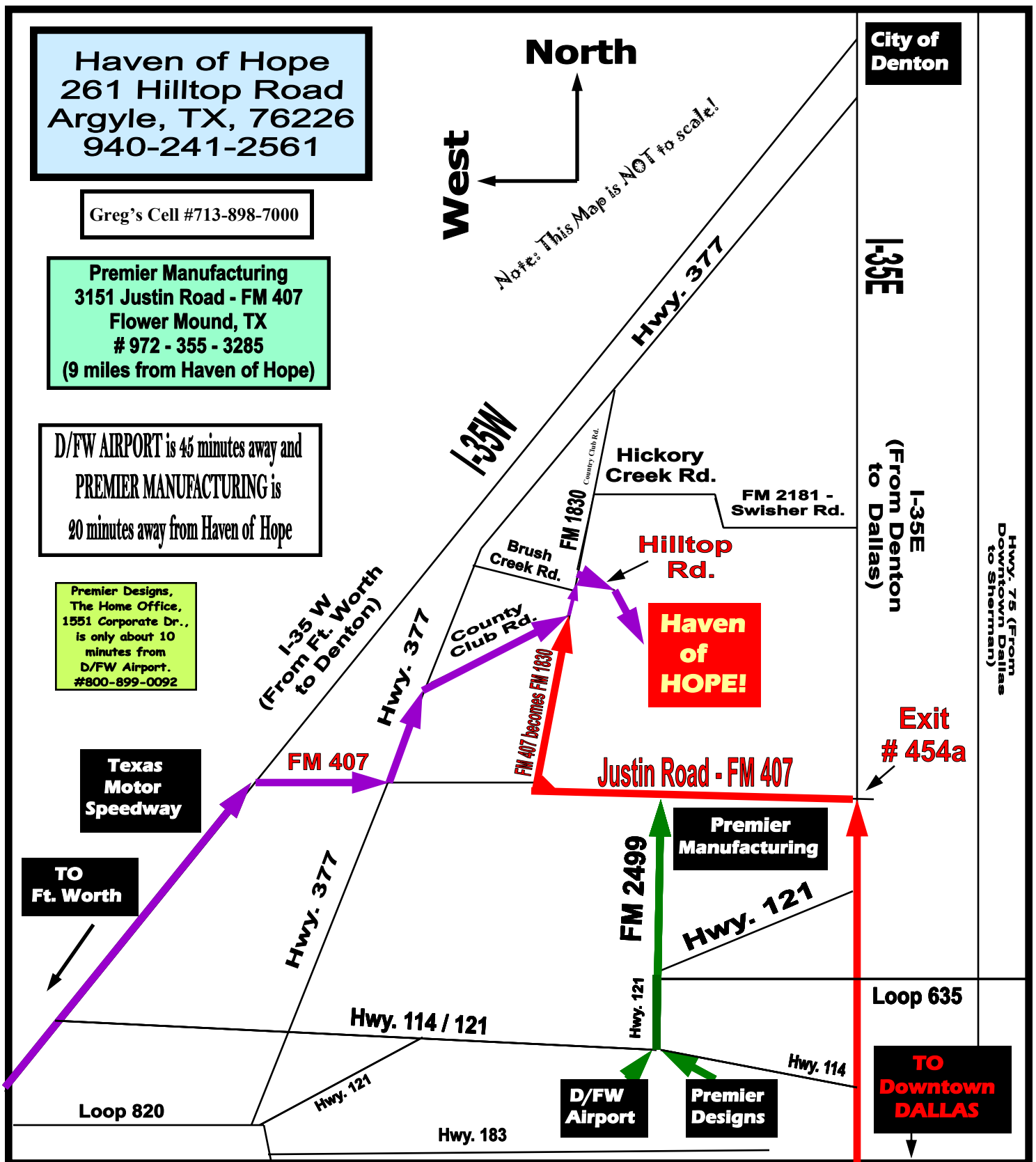
**Haven of Hope**

**8343 Hilltop Road, Argyle, TX, 76226**

Horner Lodge # **940-241-2561**

Greg 's Cell # **713-898-7000**

Melissa's Cell # **713-202-0672**



**Haven of Hope**  
 261 Hilltop Road  
 Argyle, TX, 76226  
 940-241-2561

Greg's Cell #713-898-7000

**Premier Manufacturing**  
 3151 Justin Road - FM 407  
 Flower Mound, TX  
 # 972 - 355 - 3285  
 (9 miles from Haven of Hope)

D/FW AIRPORT is 45 minutes away and  
 PREMIER MANUFACTURING is  
 20 minutes away from Haven of Hope

Premier Designs,  
 The Home Office,  
 1551 Corporate Dr.,  
 is only about 10  
 minutes from  
 D/FW Airport.  
 #800-899-0092

**Texas Motor  
 Speedway**

**TO  
 Ft. Worth**

**City of  
 Denton**

**I-35E**

(From Denton  
 to Dallas)

Hwy. 75 (From  
 Downtown Dallas  
 to Sherman)

**North**

**West**

Note: This Map is NOT to scale!

**Exit  
 # 454a**

**Loop 635**

**TO  
 Downtown  
 DALLAS**

**From Downtown Ft. Worth:** Take I-35W North towards Denton for 26 miles. Exit FM 407 (Justin Rd.) off of I-35W. Turn RIGHT on FM 407 (EAST). Go over the RailRoad Tracks. Turn LEFT on Highway 377 (North). Turn RIGHT on Country Club Road. Turn LEFT at the STOP SIGN on FM 1830. Immediately after you pass Brush Creek Rd. (which is on your left), Turn RIGHT on Hilltop Road. HAVEN of HOPE will be on your left.

**From Dallas/Ft. Worth Airport:** Take NORTH exit. Get on Highway 121 North. Soon after you go past Loop 635, Exit FM 2499. Travel on FM 2499 until you reach Justin Road (FM 407) (Premier Manufacturing is 1/4 mile on your right.), and turn LEFT. FM 407 turns into FM 1830 at the Exxon station ... STAY ON FM 1830!! Immediately after you pass Brush Creek Rd. (which is on your left), Turn RIGHT on Hilltop Road. HAVEN of HOPE will be on your left.

**From Premier Designs to Haven of Hope:** Turn Right (West) on Gateway. Turn Right (North) on the access road Turn LEFT (West) on HWY. 114 Go NORTH (right) on Hwy. 121 Soon after you go past Loop 635, Exit FM 2499 which is Long Prairie Road Follow directions in the box to the left, "Travel on FM 2499 until you reach Justin Road (FM 407) and turn LEFT ..."